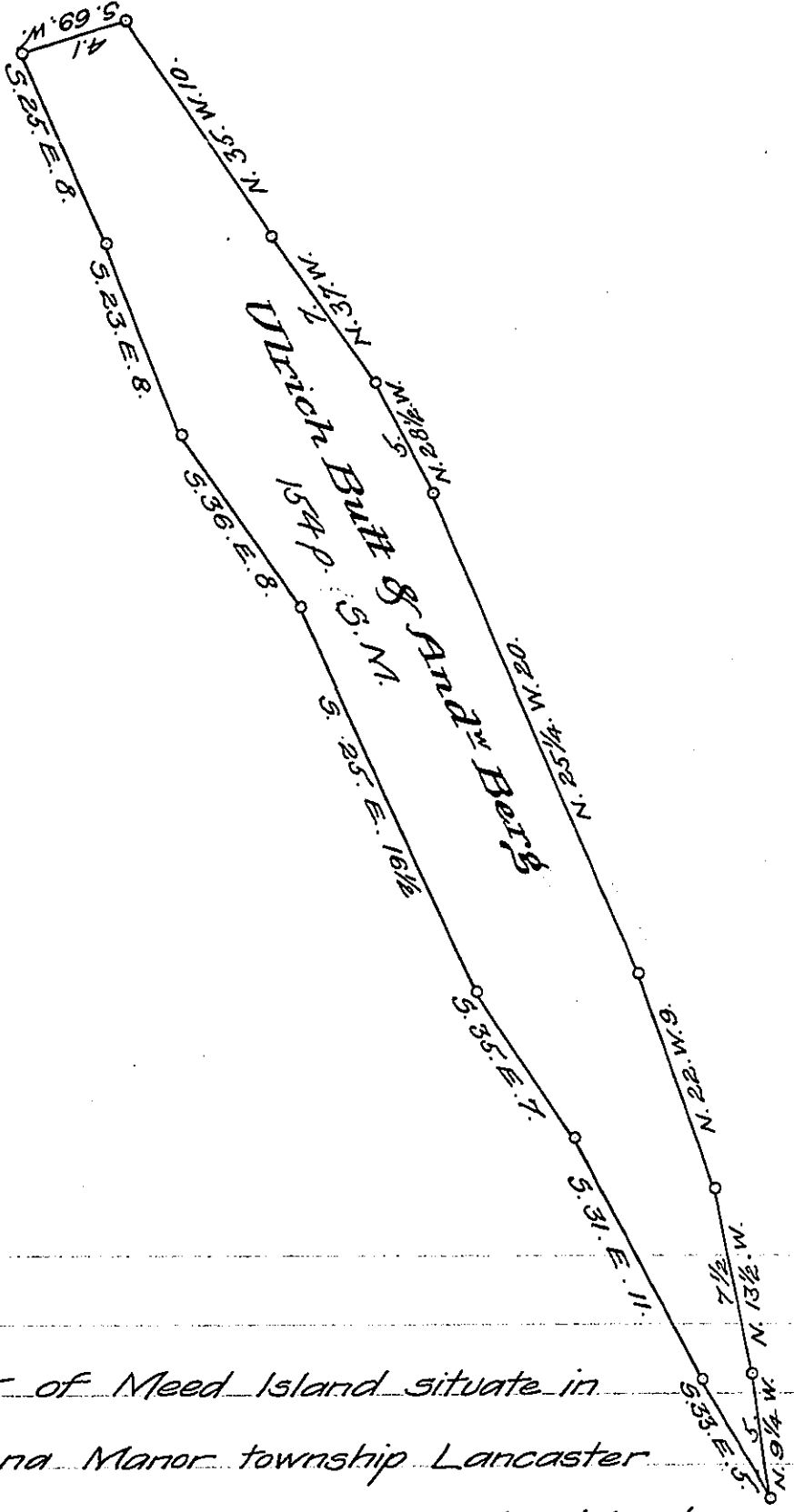


York County Shore

Lancaster County Shore



A Draught of Meed Island situate in the river Susquehanna Manor township Lancaster County lying between John & Henry Schocks Island & Jacob Dritts Island opposite land of Jacob Whitmer on the Lancaster shore and opposite land of Jacob Dritt Deceased on the York shore Containing One hundred & fifty for perches Strict Measure Surveyed the 1st day of July 1819 in pursuance of a Warrant dated the 6th day of September 1819 granted to Ulrich Butt & Andrew Berg.

p^c Jacob Hibshman D.S.

To Jacob Spangler Esq. }
 Surveyor General. }

IN TESTIMONY that the above is a copy of the original remaining on file in the Department of Internal Affairs of Pennsylvania, made conformably to an Act of Assembly approved the 16th day of February 1833, I have hereunto set my hand and caused the Seal of said Department to be affixed at Harrisburg, this twenty sixth day of November 1907.

Henry Howard
 Secretary of Internal Affairs.